



700 Sixth Street NW - Concourse Louvers and Lobby Directory

Location Washington, D.C.
Designer/Architect Hellmuth, Obata + Kassabaum Inc.
Duration Feb 2008 - Mar 2009

Scope - Soheil Mosun Limited was contracted to fabricate and install the custom air intake concourse louvers and touch-screen lobby directory cabinet for 700 Sixth Street NW in Washington D.C.

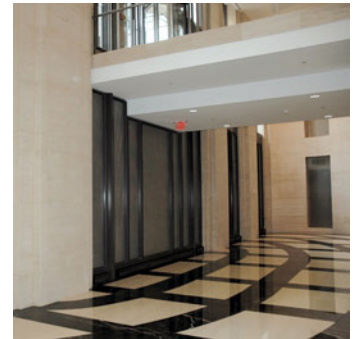
Highlights - The custom air intake louvers are fabricated from painted aluminum extrusions which frame stainless steel architectural mesh panels. The lobby directory face panel was fabricated from stainless steel with water jet cut out openings for screen and speakers. Custom concealed hinging keeps panel flush with stone wall.
In January 2010, SML was selected the winner of the Washington Building Congress Craftmanship Award® which recognizes SML's outstanding skill and achievement on its scope of work for the 700 Sixth Street NW project.



Detail of the lobby directory



The touch-screen lobby directory



Custom louvers beneath the main entrance



Center set of custom air intake louvers



Custom stainless steel mesh louvers