

Marshall Residence - Interior Finishes

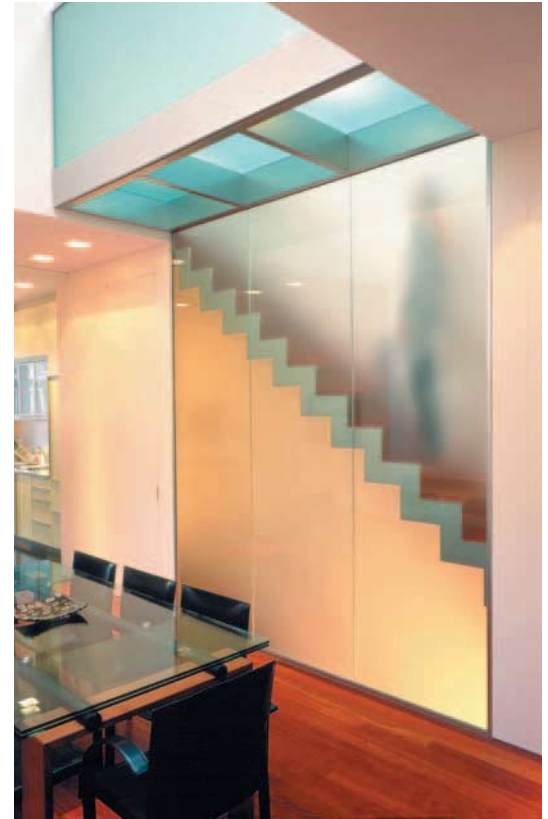
Location Toronto, Ontario
Designer / Architect Sarah Low
Duration Oct 1999 - Jun 2000

Scope - Design and fabrication of stainless steel elements of gourmet kitchen, including custom brushed stainless steel drawer pulls, seamless brushed s/s countertop and backsplash. Touch latch glass cabinetry complete with integrated exhaust hood.

Highlights - Stainless steel glass bridge is complete with etched glass balustrade. Edge lit stairs with 3/4" thick seamless stainless steel stringer complete with Jatoba wood treads and risers and machined s/s oval handrail.



Brushed stainless steel bathroom countertop



Stainless steel and glass bridge and staircase with fiber optic accent lighting



Stainless steel kitchen countertop and cabinets